

# *Rohnson*

## **Professional Hair Dryer**

### **Instruction Manual**



## **WARNING**

- 1. Do not use this appliance near water. Do not use the appliance with wet hands.**
- 2. Do not use this appliance near bathtubs, showers, basins, or other vessels containing water.**



- 3. When the hairdryer is used in a bathroom, unplug it after use since the proximity of water presents a hazard even when the hairdryer is switched off.**
- 4. For additional protection, the installation of a residual current device (RCD) having a rated residual operating current not exceeding 30mA is advisable in the electrical circuit supplying the bathroom. Ask your installer for advice.**
- 5. This appliance can be used by children aged from 8 years and above and persons with reduced physical, sensory or mental capabilities or lack of experience and knowledge if they have been given supervision or instruction concerning use of the appliance in a safe way and understand the hazards involved. Children shall not play with the appliance. Cleaning and user maintenance shall not be made by children without supervision.**
- 6. If the supply cord is damaged, it must be replaced by the manufacturer or its service agent or similarly qualified person, in order to avoid hazard.**

## **IMPORTANT SAFEGUARDS**

When using electrical appliances, basic safety precautions should always be followed, including the following:

1. Never connect the dryer to incorrect voltage.
2. If the supply cord is damaged, it must be replaced by the manufacturer or its service agent or similarly qualified person, in order to avoid hazard.
3. Make sure that the air outlet and the grill free when using.
4. The dryer is protected against overheating. It drops automatically when overheating and starts again after a short time of cooling. When the dryer stops automatically and you don't need to use it again, so as to safety switch off and remove the plug from the socket.
5. Do not put the air outlet too close to your hair. Please switch off the dryer for lengthy breaks in the drying process and disconnect it after use.
6. Keep the dryer out of reach of children.
7. Do not immerse the dryer in water or use in dampness.
8. This appliance can be used by children aged from 8 years and above and persons with reduced physical, sensory or mental capabilities or lack of experience and knowledge if they have been given supervision or instruction concerning use of the appliance in a safe way and understand the hazards involved. Children shall not play with the appliance.

Cleaning and user maintenance shall not be made by children without supervision.

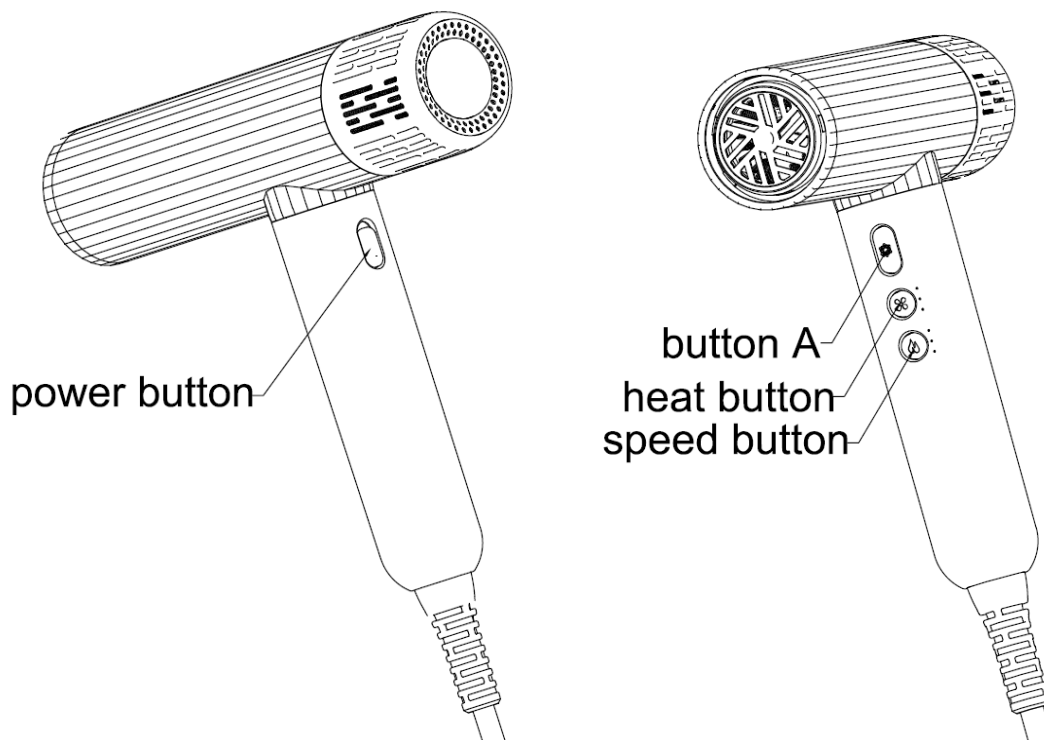
## MAINTAIN IMPORTANT

Always ensure that the hair dryer is disconnected from the mains supply before cleaning. Use a damp cloth for cleaning and wipe dry. This will help preserve the original finish of your hair dryer. Abrasive cleansers should not be used.

## WARNING

Never immerse the hair dryer in water and always ensure that plug is kept dry. After a while of use, you should take the inlet apart and clean it. Operate method: Turn the inlet toward to opposite clockwise direction, after cleaning it, turn toward to clockwise direction and fix it upon the hair dryer. Frequently clean out any hair or fluff that becomes stuck in the inlet filter.

## SPECIAL FEATURE



1. Unique design with complete function.
2. Long life BLDC motor.
3. Button A for cool shot.
4. Overheating protection.
5. Professional slim air concentrator.
6. Ionic generator.

## HOW TO USE YOUR HAIRDRYER

1. Always ensure the switch is set to OFF position before plugging the unit into the power outlet.
  2. Use the high setting for drying hair and use low setting for styling.
  3. If the hair dryer stops for any reason, turn it off at once and let it cool down.
  4. Switch control

1=Low: low speed	1=Low: low warm temperature.
2=Middle: middle speed	2=Middle: middle hot temperature
3=High: high speed	3=High: high hot temperature
  5. The concentrator & diffuser can be used on or without.
  6. Switch off when finish using, and then remove the plug from the socket.
  7. Slide the Power Button once to turn on the dryer. When turning the dryer on for the first time, it will start at the lowest heat and speed setting. To turn off the dryer, slide the Power Button once again.
- NOTE: Each time you turn the dryer on, it will start on your last set temperature and speed.
8. To alternate between high and low speed settings, press the Speed Button once.
  9. To change the temperature, press the Heat Button to reach the desired heat setting.
  10. To activate cool shot function, press and release the Button A once. To deactivate it press the button again.

## ION FUNCTION

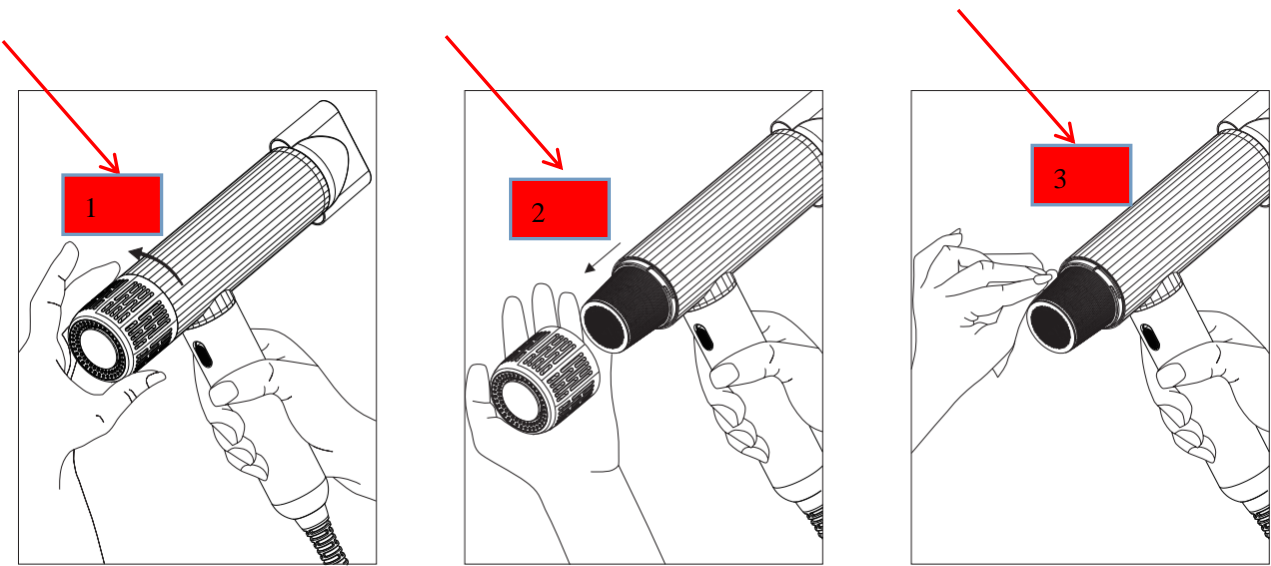
1. Protection Hair: Keeping the hair moisten, avoiding electrostatics and making the hair easy to be dressed.
2. Sterilizing: Generated ion together with tiny ozone killing various viruses and bacteria.
3. Eliminating dust and smoke: Ion neutralize molecules of the dust or powder in the air and protection them.
4. Promotes blood circulation faster, better for hair growth.

## CLEANING AND MAINTENANCE

1. Make sure that the inlet and outlet grills are clear of dust and lint for proper operating performance.
2. Your hair dryer is virtually maintenance free. No lubrication is needed.
3. Always remove the plug from the outlet and allow the dryer to cool before cleaning.
4. Twist (Figure 1) the filter cap anticlockwise to release it from the air intake of the dryer body and take down horizontal (Figure 2). Use a soft cloth or a small brush to remove dust and lint (Figure 3) that may have accumulated on the metal mesh. (You may clean the filter every 15 days).
5. The hair dryer exterior may be wiped clean with a damp cloth.
6. Ready to use after reinstalling the removable black cover.
7. CAUTION: Never allow the power supply cord to be pulled, twisted or severely bent. Never wrap the cord tightly around the dryer. Damage will occur at the high flex point of entry into the hair dryer, causing it to rupture and short. Inspect the cord frequently for damage. Stop use immediately if damage is visible, if the unit stops or if it operates intermittently.
8. If the cord or the hair dryer is damaged or does not operate properly, please contact

customer service.

9. This hair dryer has no user serviceable parts. Do not attempt to repair the appliance yourself.



**IMPORTANT INFORMATION FOR CORRECT DISPOSAL OF THE PRODUCT IN ACCORDANCE WITH EC DIRECTIVE 2012/19/EU.**

At the end of its working life, the product must not be disposed of as urban waste. It must be taken to a special local authority differentiated waste collection center or to a dealer providing this service. Disposing of a household appliance separately avoids possible negative consequences for the environment and health, deriving from inappropriate disposal and enables the constituent materials to be recovered to obtain significant savings in energy and resources. As a reminder of the need to dispose of household appliances separately, the product is marked with a crossed-out wheeled dustbin.